



# Product Change Notification

## 113885 - 00

**INFORMATION IN THIS DOCUMENT IS PROVIDED IN CONNECTION WITH INTEL PRODUCTS. NO LICENSE, EXPRESS OR IMPLIED, BY ESTOPPEL OR OTHERWISE, TO ANY INTELLECTUAL PROPERTY RIGHTS IS GRANTED BY THIS DOCUMENT. EXCEPT AS PROVIDED IN INTEL'S TERMS AND CONDITIONS OF SALE FOR SUCH PRODUCTS, INTEL ASSUMES NO LIABILITY WHATSOEVER AND INTEL DISCLAIMS ANY EXPRESS OR IMPLIED WARRANTY, RELATING TO SALE AND/OR USE OF INTEL PRODUCTS INCLUDING LIABILITY OR WARRANTIES RELATING TO FITNESS FOR A PARTICULAR PURPOSE, MERCHANTABILITY, OR INFRINGEMENT OF ANY PATENT, COPYRIGHT OR OTHER INTELLECTUAL PROPERTY RIGHT.**

**A "Mission Critical Application" is any application in which failure of the Intel Product could result, directly or indirectly, in personal injury or death. SHOULD YOU PURCHASE OR USE INTEL'S PRODUCTS FOR ANY SUCH MISSION CRITICAL APPLICATION, YOU SHALL INDEMNIFY AND HOLD INTEL AND ITS SUBSIDIARIES, SUBCONTRACTORS AND AFFILIATES, AND THE DIRECTORS, OFFICERS, AND EMPLOYEES OF EACH, HARMLESS AGAINST ALL CLAIMS COSTS, DAMAGES, AND EXPENSES AND REASONABLE ATTORNEYS' FEES ARISING OUT OF, DIRECTLY OR INDIRECTLY, ANY CLAIM OF PRODUCT LIABILITY, PERSONAL INJURY, OR DEATH ARISING IN ANY WAY OUT OF SUCH MISSION CRITICAL APPLICATION, WHETHER OR NOT INTEL OR ITS SUBCONTRACTOR WAS NEGLIGENT IN THE DESIGN, MANUFACTURE, OR WARNING OF THE INTEL PRODUCT OR ANY OF ITS PARTS.**

**Intel may make changes to specifications and product descriptions at any time, without notice. Designers must not rely on the absence or characteristics of any features or instructions marked "reserved" or "undefined". Intel reserves these for future definition and shall have no responsibility whatsoever for conflicts or incompatibilities arising from future changes to them. The information here is subject to change without notice. Do not finalize a design with this information.**

**The products described in this document may contain design defects or errors known as errata which may cause the product to deviate from published specifications. Current characterized errata are available on request.**

**Should you have any issues with the timeline or content of this change, please contact the Intel Representative(s) for your geographic location listed below. No response from customers will be deemed as acceptance of the change and the change will be implemented pursuant to the key milestones set forth in this attached PCN.**

**Americas Contact:** [asmo.pcn@intel.com](mailto:asmo.pcn@intel.com)

**Asia Pacific/PRC Contact:** [apacgccb@intel.com](mailto:apacgccb@intel.com)

**Europe Email:** [eccb@intel.com](mailto:eccb@intel.com)

**Japan Email:** [jccb.ijkk@intel.com](mailto:jccb.ijkk@intel.com)

**Copyright © Intel Corporation 2015. Other names and brands may be claimed as the property of others.**

**BunnyPeople, Celeron, Celeron Inside, Centrino, Centrino Inside, Cilk, Core Inside, i960, Intel, the Intel logo, Intel AppUp, Intel Atom, Intel Atom Inside, Intel Core, Intel Inside, Intel Insider, the Intel Inside logo, Intel NetBurst, Intel NetMerge, Intel NetStructure, Intel SingleDriver, Intel SpeedStep, Intel Sponsors of Tomorrow, the Intel Sponsors of Tomorrow logo, Intel StrataFlash, Intel vPro, Intel XScale, InTru, the InTru logo, the InTru Inside logo, InTru soundmark, Itanium, Itanium Inside, MCS, MMX, Moblin, Pentium, Pentium Inside, Puma, skool, the skool logo, Sound Mark, The Creators Project, The Journey Inside, Thunderbolt, vPro Inside, VTune, Xeon, and Xeon Inside are trademarks of Intel Corporation in the U.S. and/or other countries.**

**Learn how to use Intel Trademarks and Brands correctly at <http://www.intel.com/intel/legal/tmusage2.htm>.**



# Product Change Notification

**Change Notification #:** 113885 - 00  
**Change Title:** Intel® Server System R1304WTTGS, R1208WTTGS, R2208WTTYS, R2208WTTYC1, R2308WTTYS, R2312WTTYS, R2224WTTYS, R1304WT2GS, R1208WT2GS and R2208WT2YS  
Intel® Server Chassis R1304WTXXX, R1208WTXXX, R2000WTXXX and R2312WTXXX  
PCN 113885-00, Product Design  
Update BIOS/ME/BMC/FRUSDR Firmware, update the IO connector, remove the resistor, update the screw hole and add the mylar plastic  
**Date of Publication:** June 12, 2015

## Key Characteristics of the Change:

Product Design

## Forecasted Key Milestones:

<b>Date Customer Must be Ready to Receive Post-Conversion Material *:</b>	June 27, 2015
---	---------------

*\* Intel appreciates the customer's desire to receive the latest revision of products. However, Intel manages inventory on a first in first out (FIFO) basis at the MM# level. Subsequently, customer requests for a specific revision of material (below the MM#) will not be supported by Intel.*

## Description of Change to the Customer:

Intel is implementing the following changes on the Intel® Server System R1304WTTGS, R1208WTTGS, R2208WTTYS, R2208WTTYC1, R2308WTTYS, R2312WTTYS, R2224WTTYS, R1304WT2GS, R1208WT2GS and R2208WT2YS:

1. Update the BIOS from revision 01.01.0005 to 01.01.0008.
2. Update the Integrated Baseboard Management Controller (BMC) firmware from revision 1.09.6976 to 01.18.7601.
3. Update the Manageability Engine (ME) firmware from revision 03.00.07.114 to 03.00.07.154.
4. Update the FRUSDR from revision 1.03 to 1.06.
5. For Intel® Server System R1304WTTGS, R1208WTTGS, R2208WTTYS, R2208WTTYC1 and R2224WTTYS, update the Intel® Server Board S2600WTT Printed Board Assembly (PBA) revision from G92187-350 to G92187-351.

6. For Intel® Server System R1304WT2GS, R1208WT2GS and R2208WT2YS, update the Intel® Server Board S2600WT2 Printed Board Assembly (PBA) revision from H21573-360 to H21573-361.
7. Update the RJ45 connectors for onboard LAN ports 1 and 2 to improve the LAN cable connectivity. The locations of the IO connector are shown as Figure 1:

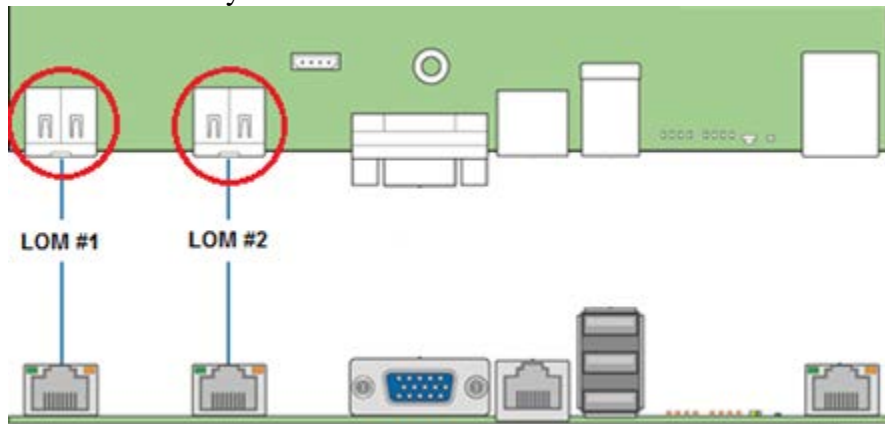


Figure 1

8. Intel is making a component level change to the onboard APL5932 voltage regulator and supporting the resistor at board location R8R8. Functional characteristic of the new voltage regulator is equivalent to the previously used component. No functional changes to the server board are expected for this change.
9. Adding support for Battery Backup Units (BBUs) compatible with Adaptec\* RAID cards. Adaptec ready BBUs can now be mounted to the Intel® RMFBU mounting plates that ship with the system.

Intel is implementing the following changes on the Intel® Server System R2308WTTYS and R2312WTTYS:

1. Update the BIOS from revision 01.01.0005 to 01.01.0008.
2. Update the Integrated Baseboard Management Controller (BMC) firmware from revision 1.09.6976 to 01.18.7601.
3. Update the Manageability Engine (ME) firmware from revision 03.00.07.114 to 03.00.07.154.
4. Update the FRUSDR from revision 1.03 to 1.06.
5. Update the Intel® Server Board S2600WTT Printed Board Assembly (PBA) revision from G92187-350 to G92187-351.
6. Update the RJ45 connectors for onboard LAN ports 1 and 2 to improve the LAN cable connectivity. The locations of the IO connector are shown as Figure 1.
7. Intel is making a component level change to the onboard APL5932 voltage regulator and supporting the resistor at board location R8R8. Functional characteristic of the new voltage regulator is equivalent to the previously used component. No functional changes to the server board are expected for this change.

8. Adding support for Battery Backup Units (BBUs) compatible with Adaptec\* RAID cards. Adaptec ready BBUs can now be mounted to the Intel® RMFBU mounting plates that ship with the system.
9. Add the Mylar plastic on the bottom of the hard disk carrier bay to improve the fit of the chassis mechanical assembly. See Figure 2:

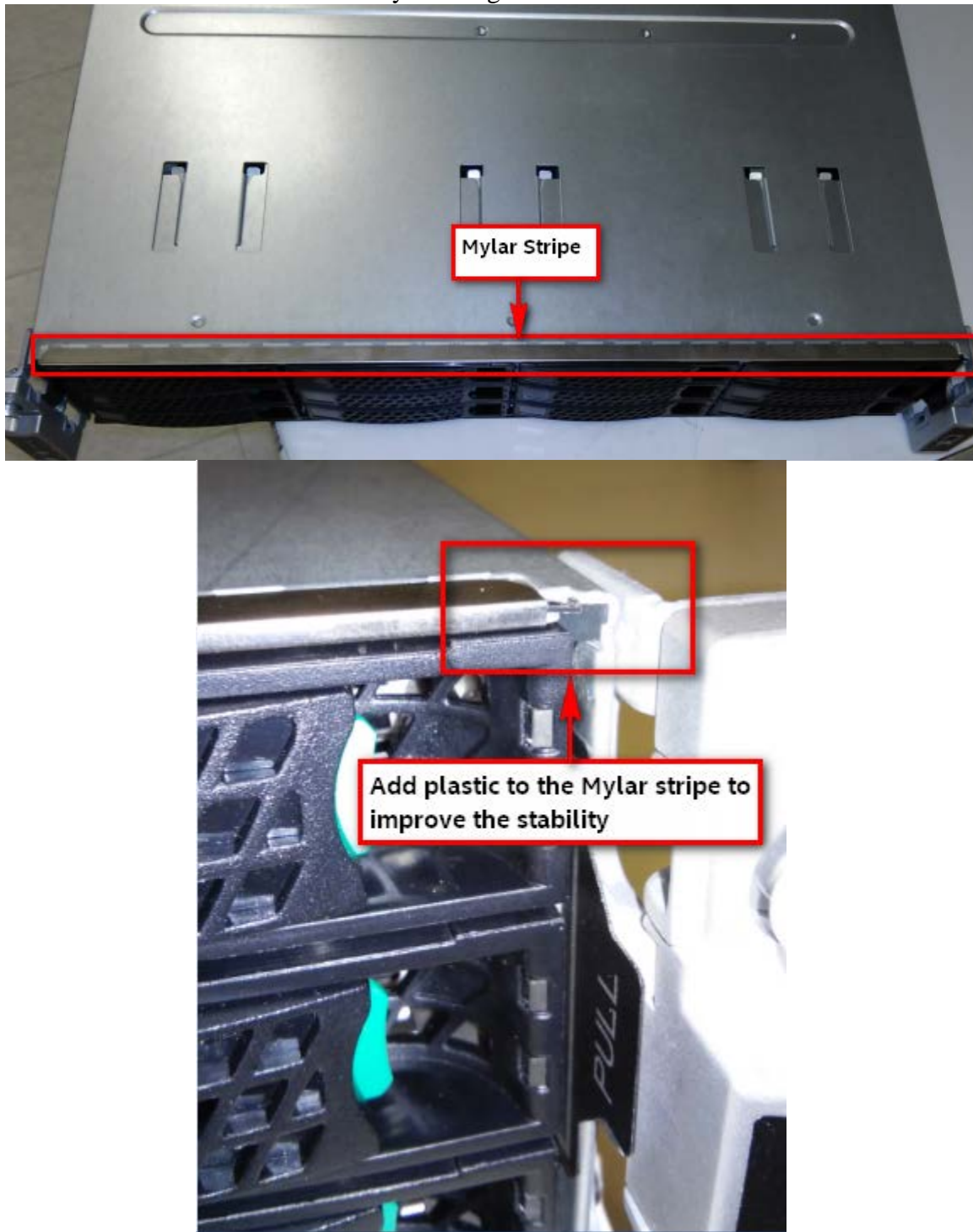


Figure 2

The system software update package, including the release notes for each, is available for downloading from <http://www.intel.com/support>. Please refer to the software release notes for a list of changes.

Intel is implementing the following change on the Intel® Server Chassis R1304WTXXX, R1208WTXXX and R2000WTXXX:

Adding support for Battery Backup Units (BBUs) compatible with Adaptec\* RAID cards. Adaptec ready BBUs can now be mounted to the Intel® RMFBU mounting plates that ship with the system.

Intel is implementing the following changes on the Intel® Server Chassis R2312WTXXX:

1. Adding support for Battery Backup Units (BBUs) compatible with Adaptec\* RAID cards. Adaptec ready BBUs can now be mounted to the Intel® RMFBU mounting plates that ship with the system.
2. Add the Mylar plastic on the bottom of the hard disk carrier bay to improve the fit of the chassis mechanical assembly. See Figure 2.

### Customer Impact of Change and Recommended Action:

Intel does not expect any impact to customers from these changes. Customers may need to validate the function and feature changes once the post-change system is available.

Customers can download and evaluate the system software update package at

<http://www.intel.com/support>.

### Products Affected / Intel Ordering Codes:

Intel® Server System			
Product Code	MM#	Pre Change TA	Post Change TA
R1304WTTGS	934967	H46983-001	H46983-002
R1208WTTGS	934968	H46986-001	H46986-002
R2208WTTYYS	936023	H46991-001	H46991-002
R2208WTTYC1	936033	H46994-001	H46994-002
R2308WTTYYS	936035	H46990-001	H46990-002
R2312WTTYYS	936036	H46999-001	H46999-002
R2224WTTYYS	936037	H46996-001	H46996-002
R1304WT2GS	935059	H46984-001	H46984-002
R1208WT2GS	935060	H46987-004	H46987-005
R2208WT2YS	936032	H46992-001	H46992-002

Intel® Server Chassis			
Product Code	MM#	Pre Change TA	Post Change TA
R1304WTXXX	936121	H46985-001	H46985-002
R1208WTXXX	936187	H46988-001	H46988-002
R2312WTXXX	936022	H46998-001	H46998-002
R2000WTXXX	936021	H46995-001	H46995-002

### PCN Revision History:

**Date of Revision:**

June 12, 2015

**Revision Number:**

00

**Reason:**

Originally Published PCN