



Product Change Notification

Change Notification #: 118191-00
Change Title: Select Intel® NUC Rugged Board Element and Rugged Chassis Element
PCN 118191-00, Label, Product Design UKCA label, MAC label, and Firmware updates
Date of Publication: April 09, 2021

Key Characteristics of the Change:
 Label, Product Design

Forecasted Key Milestones:

Date Customer Must be Ready to Receive Post-Conversion Material:	May 07, 2021
---	--------------

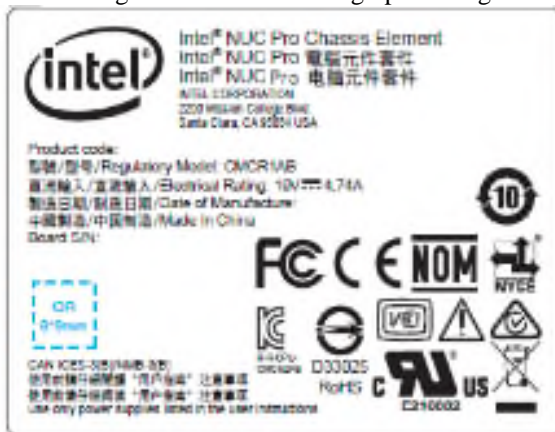
Description of Change to the Customer:

The Intel SKUs listed in the products affected table will have the following changes.

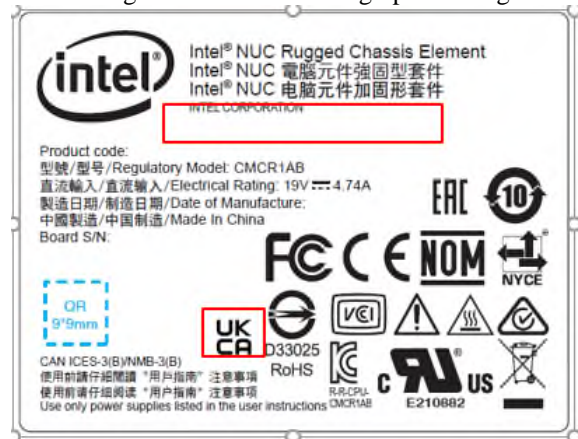
1. Add UKCA logo on regulatory flyer/rating label/Box label, Carton label, Board and power adapter
2. Remove the Intel address from rating label.
3. Add Mac address label on ABB board sku only.
4. Add NVMe only and NVMe/SATA label on M.2 slot.
5. Update EC FW to version 2.20

Please refer to the label image examples below for details.

Rating label with UKCA logo pre-change:



Rating label with UKCA logo post-change:



Carton label with UKCA logo pre-change:



Carton label with UKCA logo post-change:



BOX label with UKCA logo pre-change:



BOX label with UKCA logo post-change:



Regulatory flyer for chassis pre-change:



Regulatory flyer for chassis post-change:



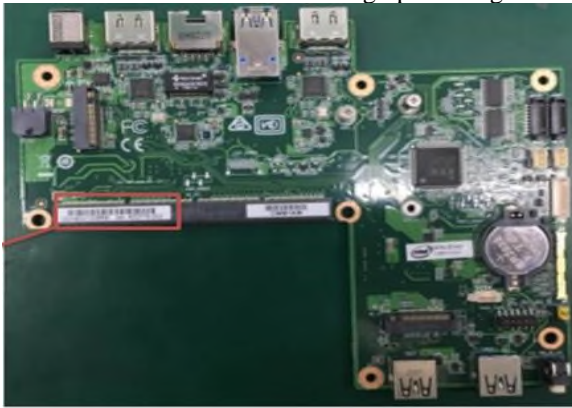
Regulatory flyer for board only pre-change:



Regulatory flyer for board only post-change:



ABA Board added UKCA logo pre-change:



ABA Board added UKCA logo post-change:

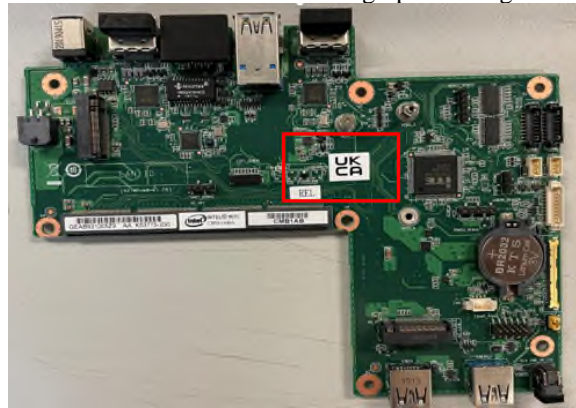
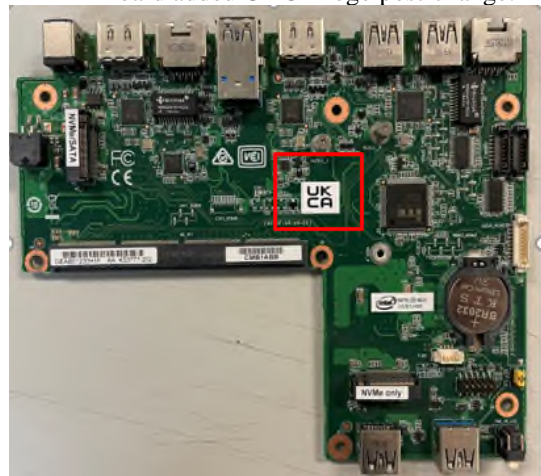


ABB Board added UKCA logo pre-change:



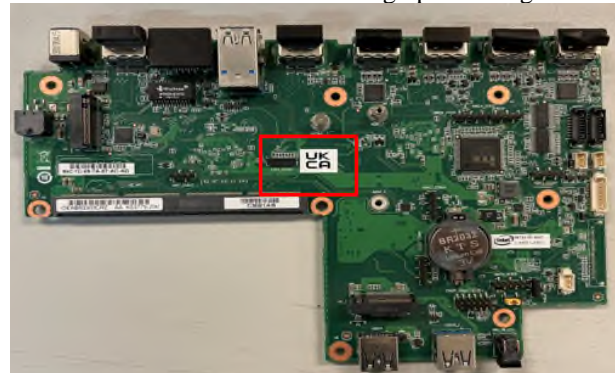
ABB Board added UKCA logo post-change:



ABC Board added UKCA logo pre-change:



ABC Board added UKCA logo post-change:



HuntKey/HKA09019047 Adapter pre-change:



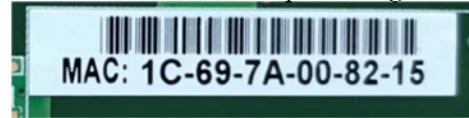
HuntKey/HKA09019047 Adapter post-change:



Add MAC address on ABB sku pre-change:

N/A

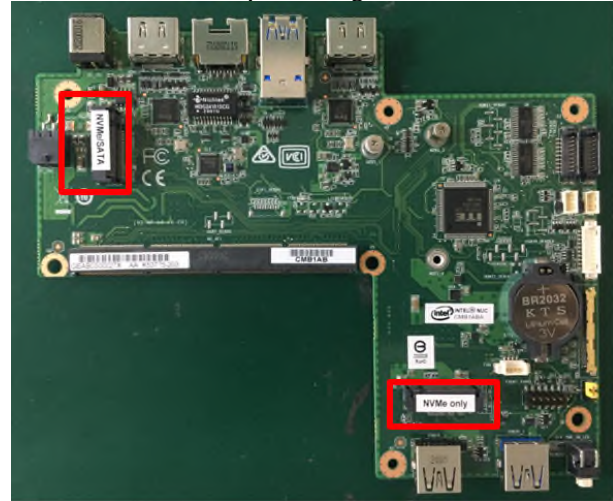
Add MAC address on ABB sku post-change:



Add NVMe/only and NVMe/SATA label on M.2 slot pre-change:



Add NVMe/only and NVMe/SATA label on M.2 slot post-change:



Customer Impact of Change and Recommended Action:

The change to the labels or documentation does not affect the functionality of the product. Customer should be aware of these changes and take any actions so as to not impact their receiving and integration of product with the new label.

It is recommended that customers evaluate this new Embedded Controller Firmware to ensure a smooth transition. This change has been thoroughly evaluated to ensure that there are no known quality or reliability implications to our customers.

Milestone dates are estimates and subject to change based on business and operational conditions.

Customer can expect to receive mixed inventory until current inventory levels are depleted.

Please contact your local Intel Field Sales Rep if you have any further questions about these changes.

Products Affected/Intel Ordering Codes:

Marketing Name	Product Code	MM#	Pre-Change TA	Pre-Change SA	Pre-Change AA	Post-Change TA	Post-Change SA	Post-Change AA
Intel® NUC Rugged Board Element CMB1ABA, 5 pack	BKCMCMB1ABA	999M8C	K68044-100	N/A	K53775-203	K68044-101	N/A	K53775-204
Intel® NUC Rugged Board Element CMB1ABB, 5 pack	BKCMCMB1ABB	999M8F	K68047-100	N/A	K53777-203	K68047-101	N/A	K53777-204
Intel® NUC Rugged Board Element CMB1ABC, 5 pack	BKCMCMB1ABC	999M8M	K68054-100	N/A	K53779-303	K68054-101	N/A	K53779-304
Intel® NUC Rugged Chassis Element CMCR1ABA, no cord, 2 pack	BKCMCR1ABA	999M8V	K68046-100	K53776-204	N/A	K68046-101	K53776-205	N/A
Intel® NUC Rugged Chassis Element CMCR1ABA, US cord, 2 pack	BKCMCR1ABA1	999M93	K68046-100	K53776-204	N/A	K68046-101	K53776-205	N/A
Intel® NUC Rugged Chassis Element CMCR1ABA, EU cord, 2 pack	BKCMCR1ABA2	999M95	K68046-100	K53776-204	N/A	K68046-101	K53776-205	N/A
Intel® NUC Rugged Chassis Element CMCR1ABB, no cord, 2 pack	BKCMCR1ABB	999M96	K68052-101	K53778-204	N/A	K68052-102	K53778-205	N/A
Intel® NUC Rugged Chassis Element CMCR1ABB, US cord, 2 pack	BKCMCR1ABB1	999M97	K68052-101	K53778-204	N/A	K68052-102	K53778-205	N/A
Intel® NUC Rugged Chassis Element CMCR1ABB, EU cord, 2 pack	BKCMCR1ABB2	999M98	K68052-101	K53778-204	N/A	K68052-102	K53778-205	N/A
Intel® NUC Rugged Chassis Element CMCR1ABC, no cord, 2 pack	BKCMCR1ABC	999M9A	K68056-100	K53784-304	N/A	K68056-101	K53784-305	N/A
Intel® NUC Rugged Chassis Element CMCR1ABC, US cord, 2 pack	BKCMCR1ABC1	999M9C	K68056-100	K53784-304	N/A	K68056-101	K53784-305	N/A
Intel® NUC Rugged Chassis Element CMCR1ABC, EU cord, 2 pack	BKCMCR1ABC2	999M9D	K68056-100	K53784-304	N/A	K68056-101	K53784-305	N/A

PCN Revision History:

Date of Revision:

April 09, 2021

Revision Number:

00

Reason:

Originally Published PCN



Product Change Notification

118191-00

INFORMATION IN THIS DOCUMENT IS PROVIDED IN CONNECTION WITH INTEL PRODUCTS. NO LICENSE, EXPRESS OR IMPLIED, BY ESTOPPEL OR OTHERWISE, TO ANY INTELLECTUAL PROPERTY RIGHTS IS GRANTED BY THIS DOCUMENT. EXCEPT AS PROVIDED IN INTEL'S TERMS AND CONDITIONS OF SALE FOR SUCH PRODUCTS, INTEL ASSUMES NO LIABILITY WHATSOEVER AND INTEL DISCLAIMS ANY EXPRESS OR IMPLIED WARRANTY, RELATING TO SALE AND/OR USE OF INTEL PRODUCTS INCLUDING LIABILITY OR WARRANTIES RELATING TO FITNESS FOR A PARTICULAR PURPOSE, MERCHANTABILITY, OR INFRINGEMENT OF ANY PATENT, COPYRIGHT OR OTHER INTELLECTUAL PROPERTY RIGHT.

A "Mission Critical Application" is any application in which failure of the Intel Product could result, directly or indirectly, in personal injury or death. SHOULD YOU PURCHASE OR USE INTEL'S PRODUCTS FOR ANY SUCH MISSION CRITICAL APPLICATION, YOU SHALL INDEMNIFY AND HOLD INTEL AND ITS SUBSIDIARIES, SUBCONTRACTORS AND AFFILIATES, AND THE DIRECTORS, OFFICERS, AND EMPLOYEES OF EACH, HARMLESS AGAINST ALL CLAIMS COSTS, DAMAGES, AND EXPENSES AND REASONABLE ATTORNEYS' FEES ARISING OUT OF, DIRECTLY OR INDIRECTLY, ANY CLAIM OF PRODUCT LIABILITY, PERSONAL INJURY, OR DEATH ARISING IN ANY WAY OUT OF SUCH MISSION CRITICAL APPLICATION, WHETHER OR NOT INTEL OR ITS SUBCONTRACTOR WAS NEGLIGENT IN THE DESIGN, MANUFACTURE, OR WARNING OF THE INTEL PRODUCT OR ANY OF ITS PARTS.

Intel may make changes to specifications and product descriptions at any time, without notice. Designers must not rely on the absence or characteristics of any features or instructions marked "reserved" or "undefined". Intel reserves these for future definition and shall have no responsibility whatsoever for conflicts or incompatibilities arising from future changes to them. The information here is subject to change without notice. Do not finalize a design with this information.

The products described in this document may contain design defects or errors known as errata which may cause the product to deviate from published specifications. Current characterized errata are available on request.

Should you have any issues with the timeline or content of this change, please contact the Intel Representative(s) for your geographic location listed below. No response from customers will be deemed as acceptance of the change and the change will be implemented pursuant to the key milestones set forth in this attached PCN.

Americas Contact: asmo.pcn@intel.com

Asia Pacific/PRC Contact: apacgccb@intel.com

Europe Email: eccb@intel.com

Japan Email: jccb.ijkk@intel.com

Copyright © Intel Corporation 2021. Other names and brands may be claimed as the property of others.

3D XPoint, Axxia, Basis, Basis Peak, BlueMoon, BunnyPeople, Celeron, Centrino, Cilk, Curie, Flexpipe, Intel, the Intel logo, Intel Atom, Intel CoFluent, Intel Core, Intel. Experience What's Inside, the Intel. Experience What's Inside logo, Intel Inside, the Intel Inside logo, Intel Insider, Intel Joule, Intel RealSense, Intel SingleDriver, Intel SpeedStep, Intel Unite, Intel vPro, Intel Xeon Phi, Intel XScale, InTru, the InTru logo, the InTru Inside logo, InTru soundmark, Iris, Itanium, MCS, MMX, Optane, Ostro, Pali, Pentium, picoArray, Picochip, picoXcell, Puma, Quark, SMARTi, Soletta, Sound Mark, StarPro, Stay With It, the Engineering Stay With It logo, StreamSight, Tarari, The Journey Inside, Thunderbolt, the Thunderbolt logo, Transcede, True Key, Ultrabook, VTune, Xeon, X-GOLD, XMM, X-PMU and XPOSYS are trademarks of Intel Corporation or its subsidiaries in the U.S. and/or other countries.

Microsoft, Windows, and the Windows logo are trademarks, or registered trademarks of Microsoft Corporation in the United States and/or other countries. Java is a registered trademark of Oracle and/or its affiliates. Bluetooth is a trademark owned by its proprietor and used by Intel Corporation under license. Intel Corporation uses the Palm OS* Ready mark under license from Palm, Inc. OpenCL and the OpenCL logo are trademarks of Apple Inc. used by permission by Khronos.

Learn how to use Intel Trademarks and Brands correctly at <http://www.intel.com/intel/legal/tmusage2.htm>.